

How History & Heritage Inform Design

What have we done so far?



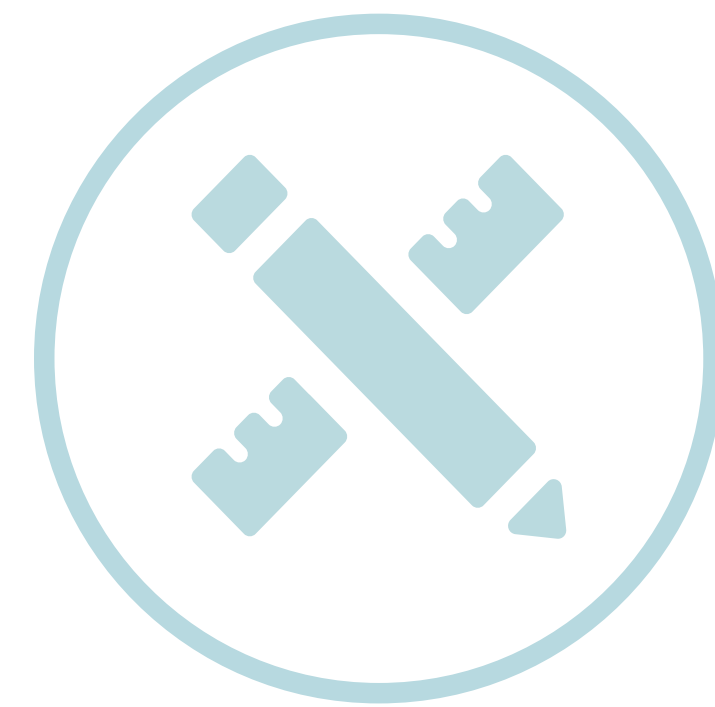
How History & Heritage Inform Design

What's the purpose of today's event?

This heritage workshop seeks to discuss how the local heritage has informed the architectural design on three levels:



Masterplanning



Workshop:
'How to celebrate
History and Heritage
and Extend the High
Path Legacy'

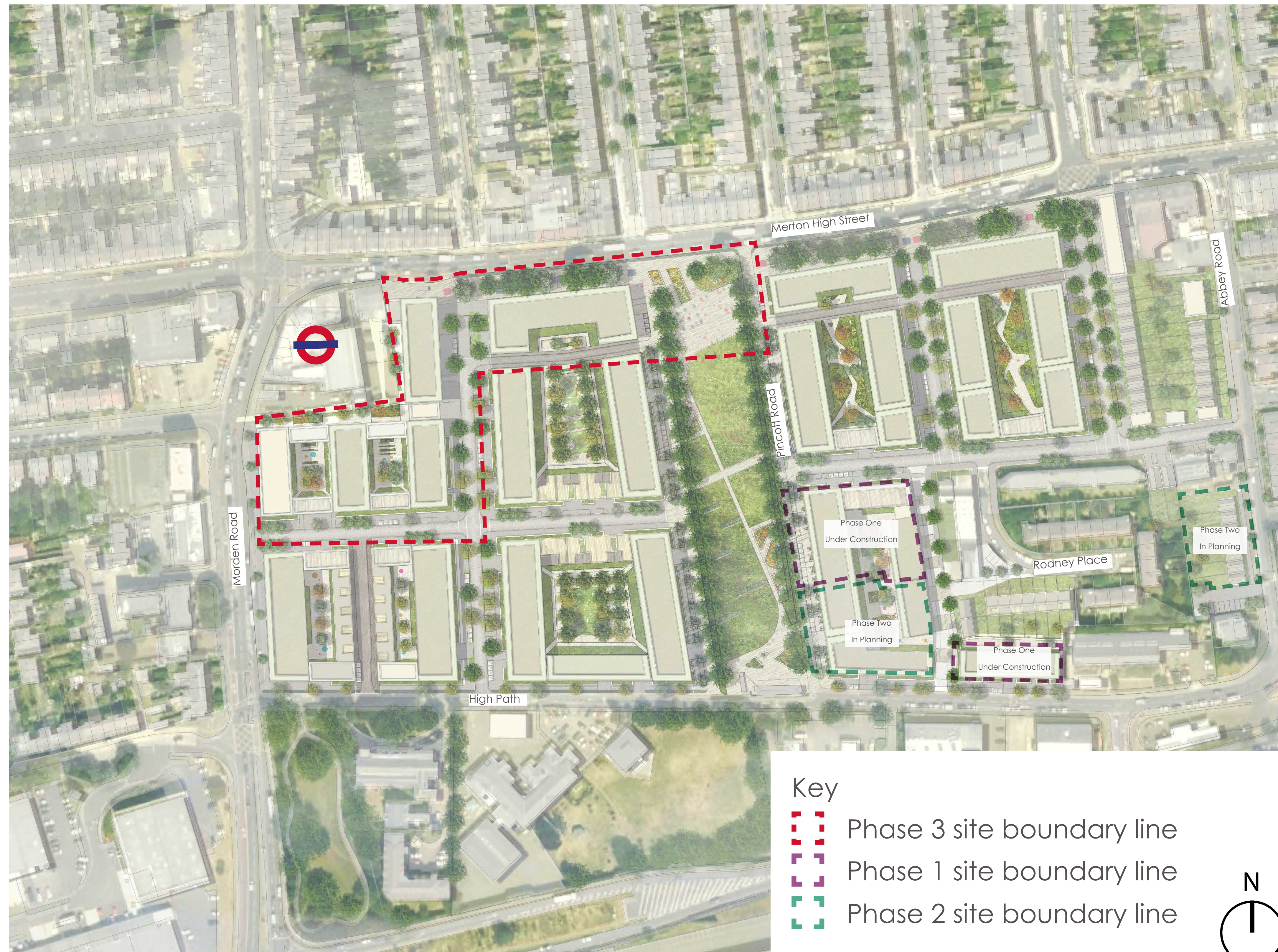


Architecture



Public realm

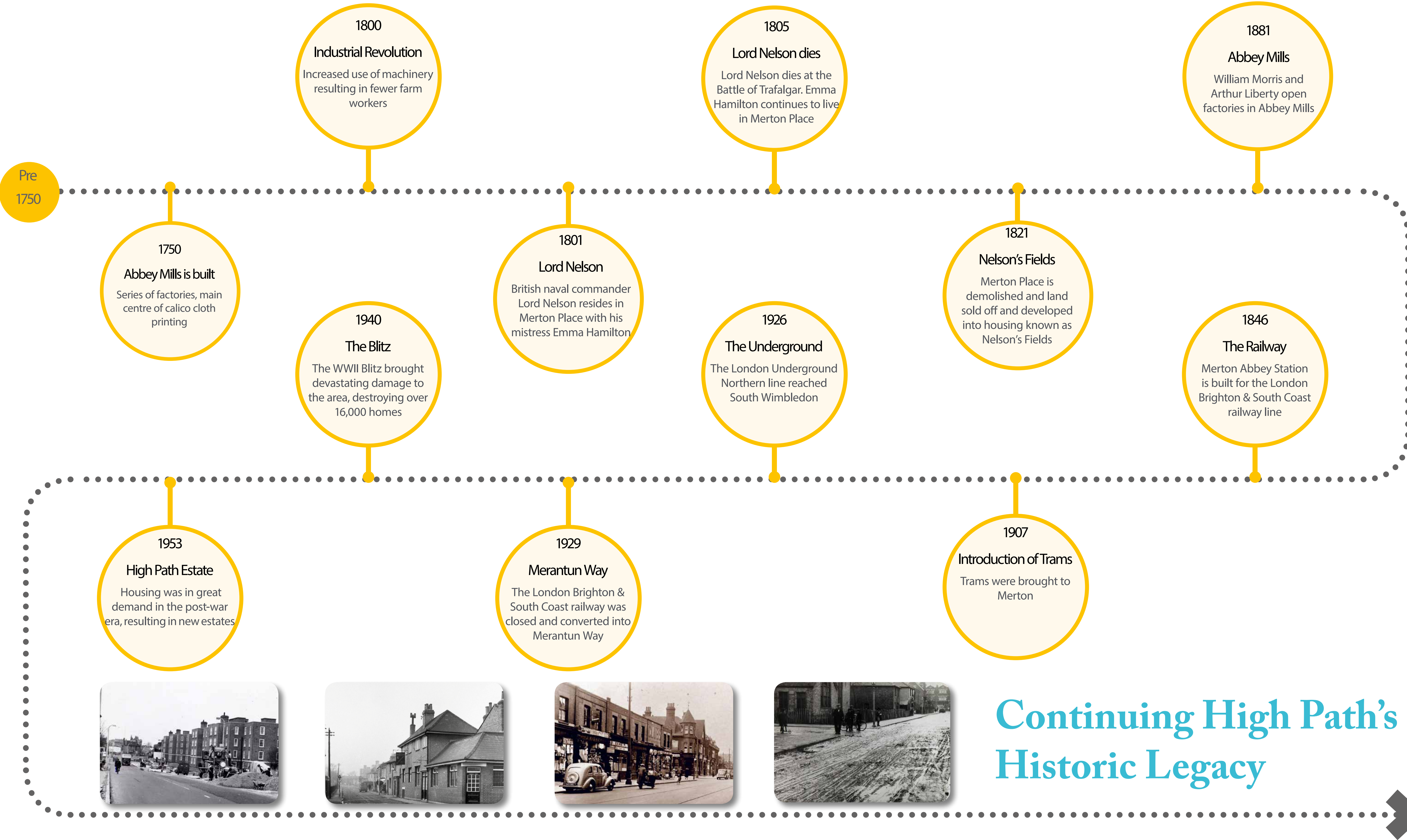
High Path



Celebrating History



PRP



Celebrating History



Lord Nelson



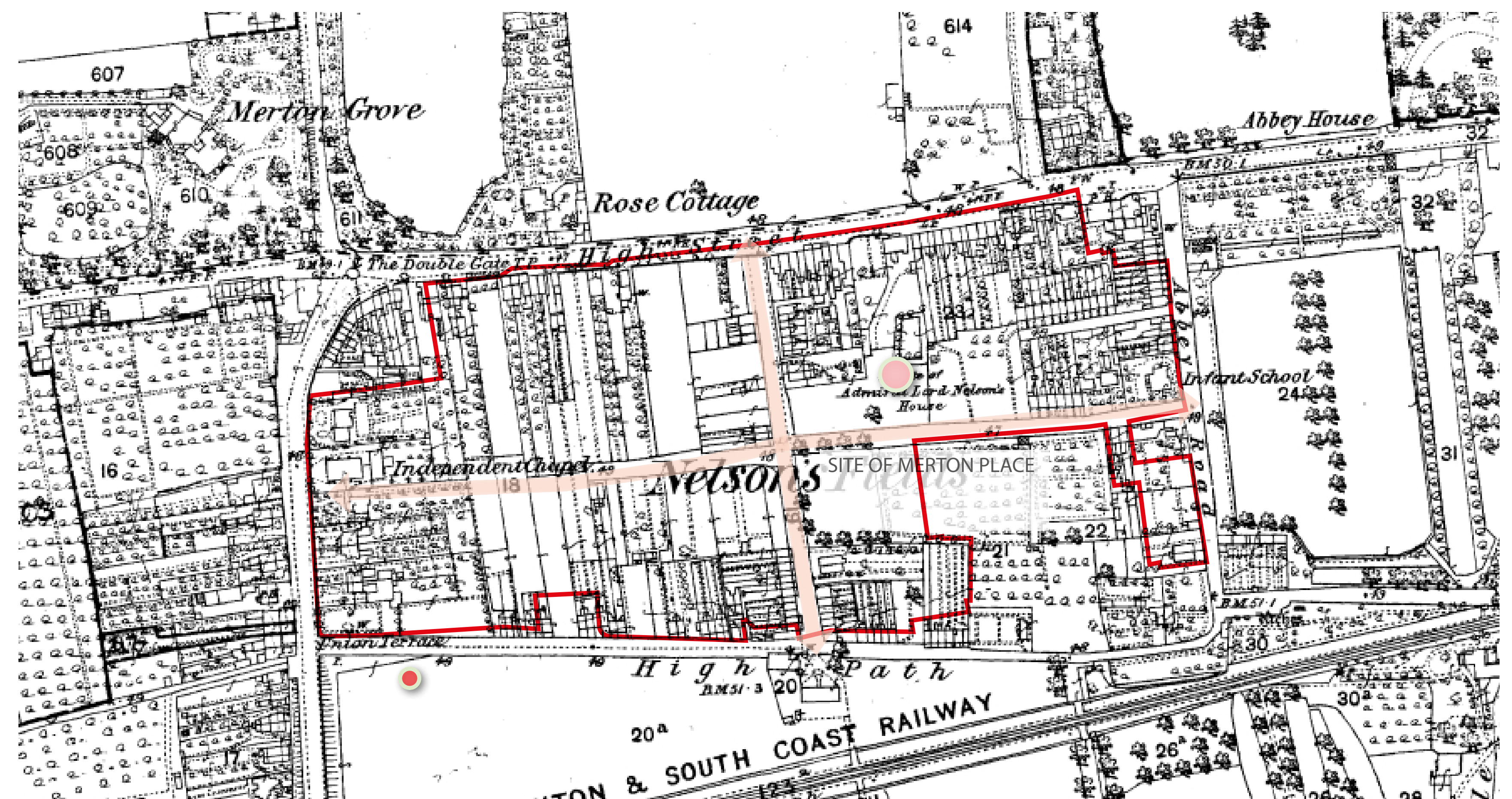
Lady Emma Hamilton



Merton Place

Britain's two biggest 18th-century celebrities

Over a century ago, the site used to accommodate the house of Admiral Nelson, one of Britain's greatest naval heroes. Merton Place was his home in the early 1800s.



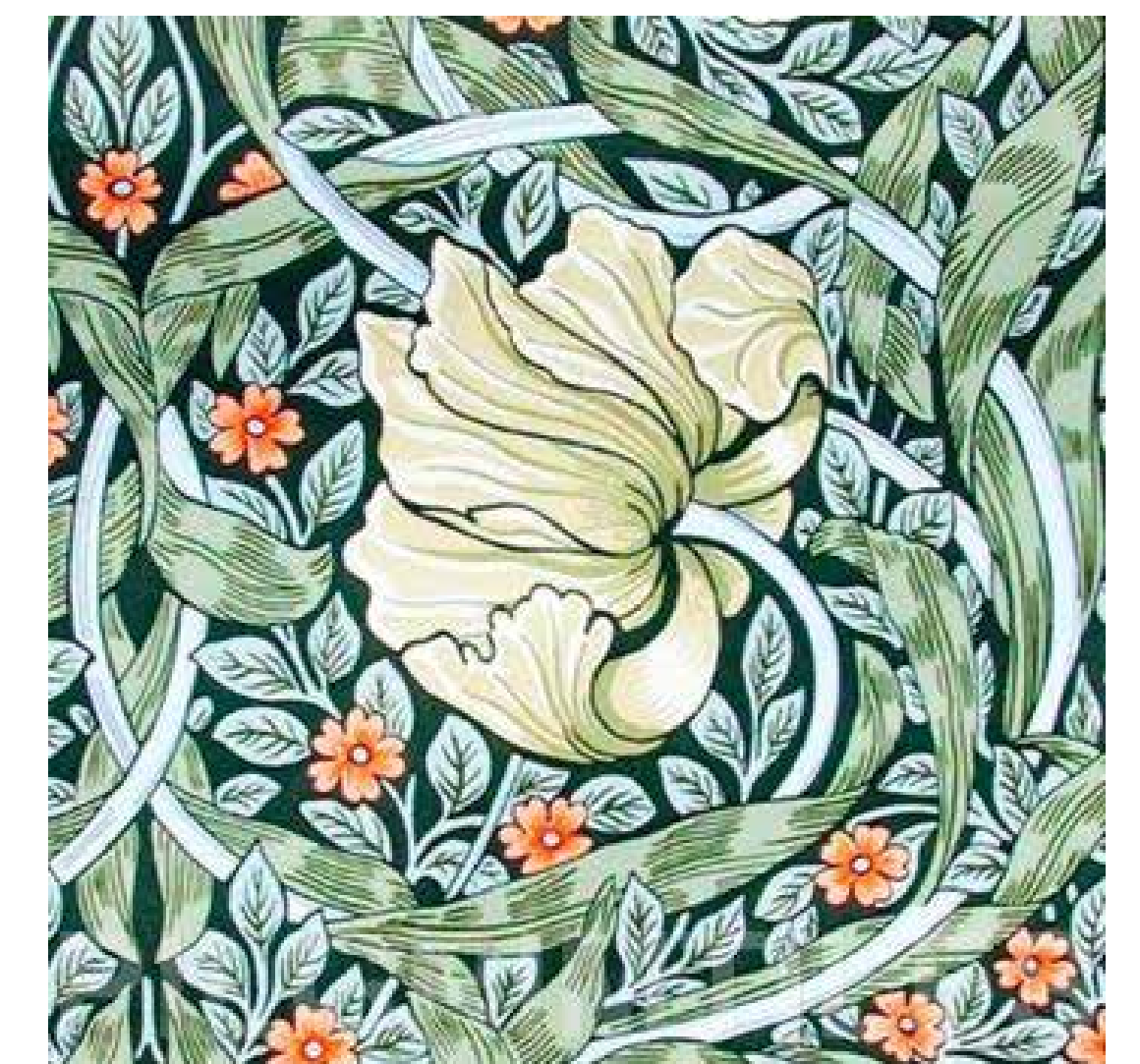
Celebrating History - Merton Abbey Mills



Celebrating History



William Morris

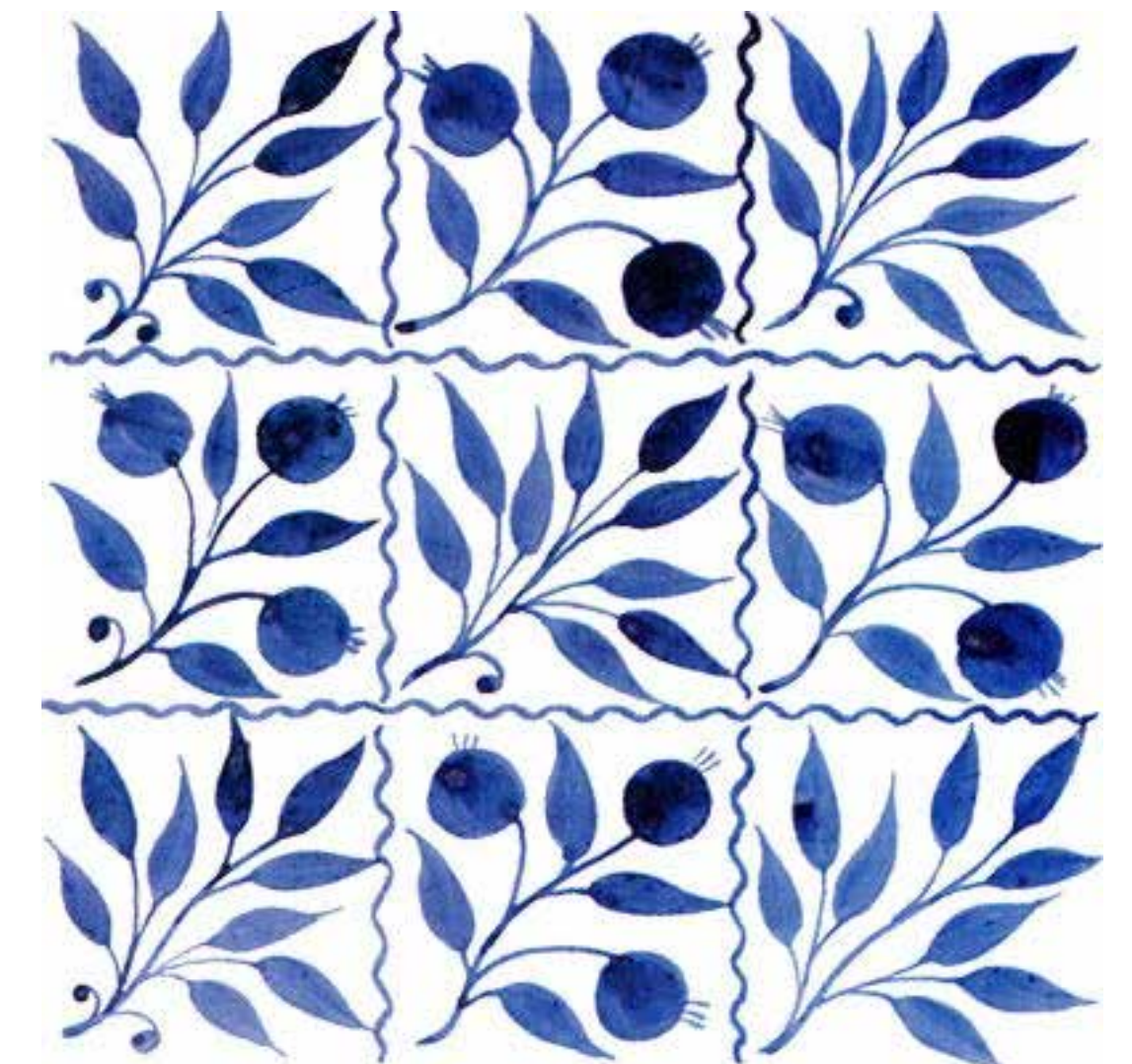
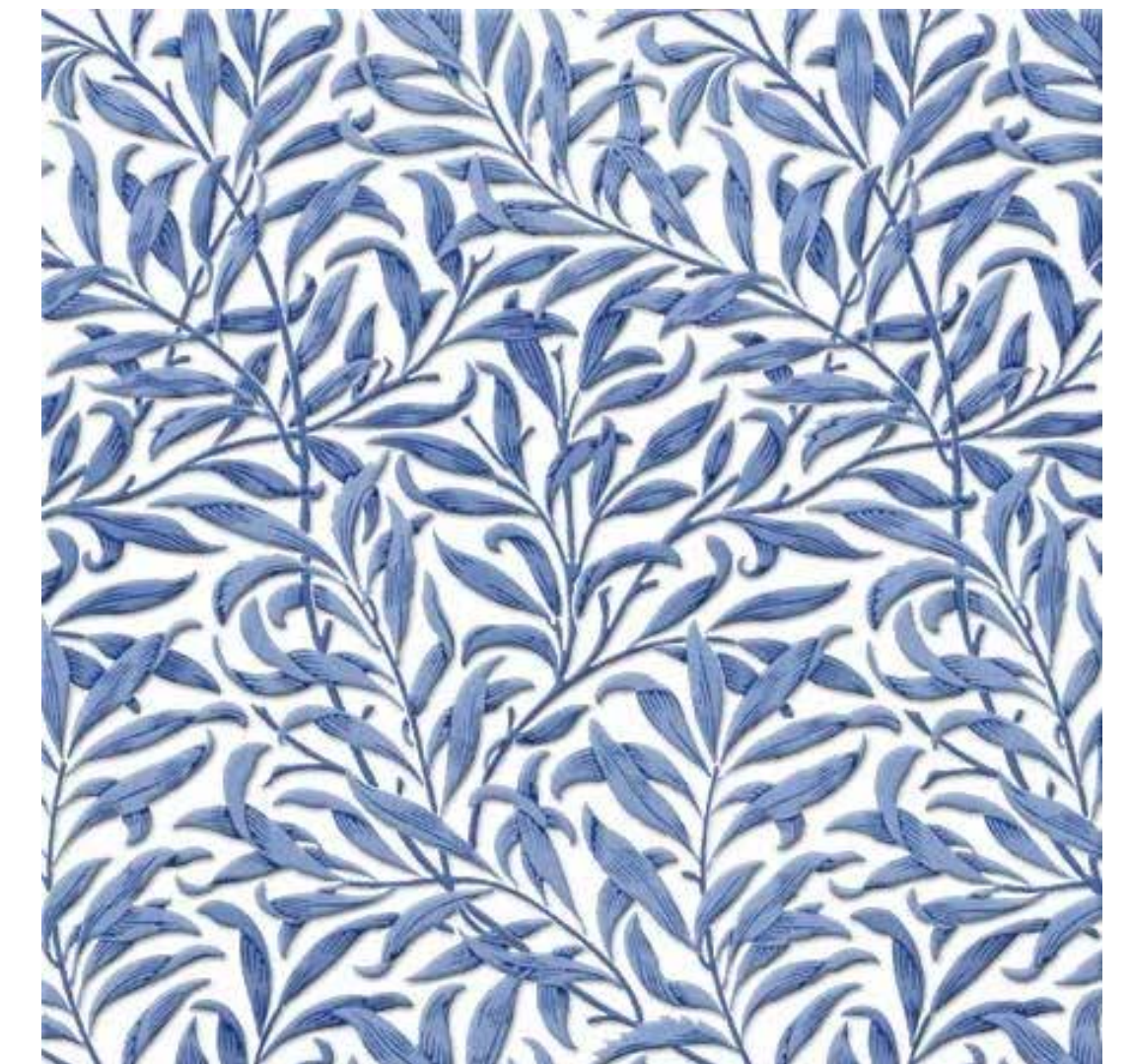


William Morris was an artist, textile designer, poet & writer, philosopher and social activist. He is largely associated with Britain's Arts and Craft Movement.

Celebrating History



William De Morgan



William Frend De Morgan was an English potter, tile designer and novelist. A lifelong friend of William Morris, he designed tiles, stained glass and furniture.

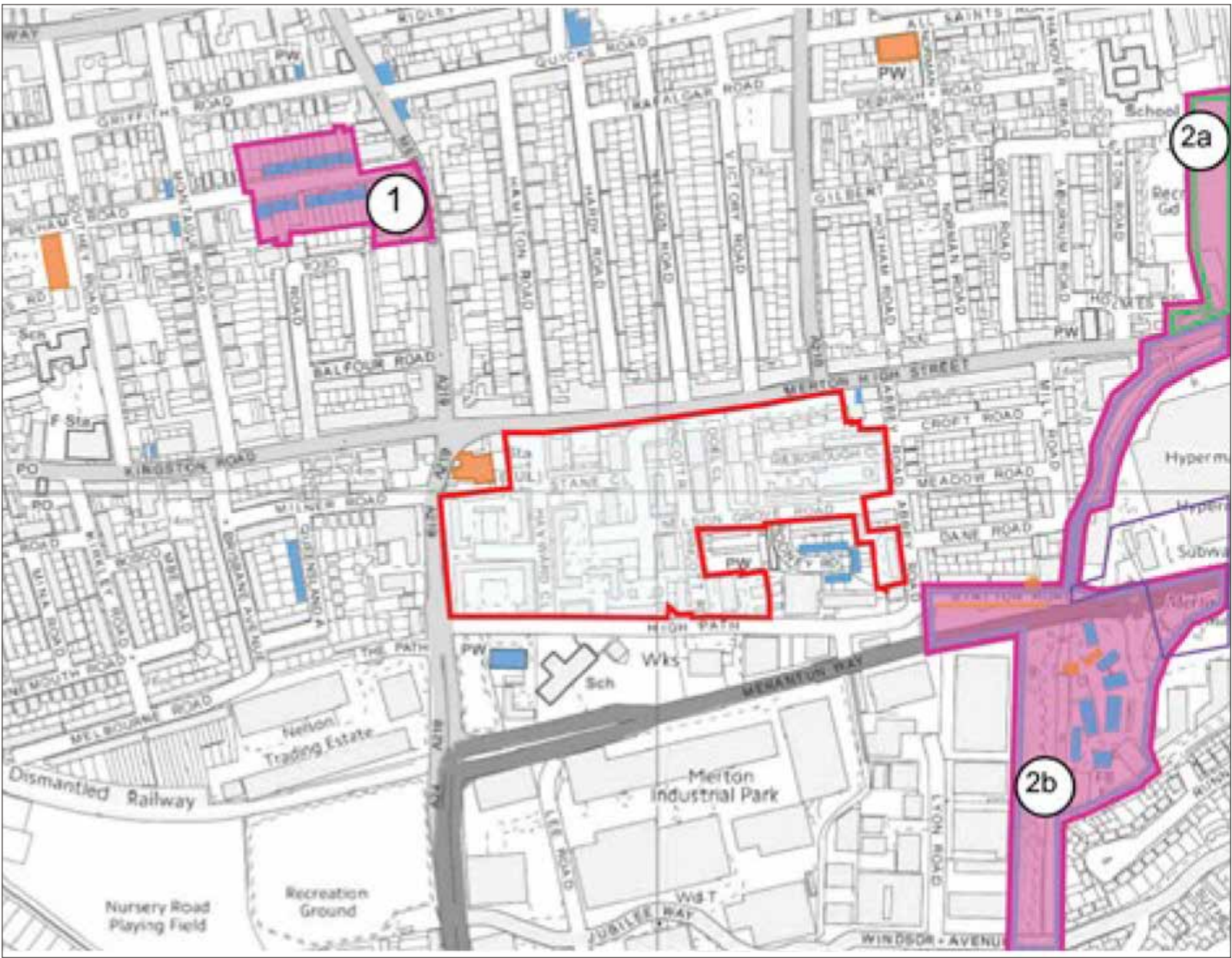
Celebrating Heritage

CONSERVATION AREAS

Merton and South Wimbledon have a **rich and diverse architectural heritage**, with varied roofscapes and contrasting palette of materials which articulate entrances, fenestration, as well as the top building parapets. There are two conservation areas nearby: **Pelham Road and Wandle Valley**.

Pelham Road Conservation Area is located to the North-West of High Path, connecting Merton Road and Gladstone Road.

The buildings, dating from 1879-1898 present ornate porched entrances, with the arch as the main design element of the frontages, articulating both windows and doors and generating an array of repetitive elements with projecting bay windows at the raised ground floor.



Conservation areas and listed buildings

- Conservation areas (1-Pelham Road, 2-Wandle Valley)
- Grade II Listed Buildings
- Locally Listed Buildings



Semi-detached houses on Pelham Road



Key listed and historic buildings around High Path

1. South Wimbledon Station - Grade II listed building
2. St. John The Divine Church - locally listed
3. Rodney Place - locally listed
4. 25 Abbey Road - Former Princess Royal Public House
5. The Nelson Arms PH

★ Approximate location of Lord Nelson House



Illustration of Merton Place in 1803

Celebrating Heritage

LOCAL VERNACULAR & MATERIALITY



Celebrating Heritage

LOCAL ELEMENTS OF HISTORIC CHARACTER



Rodney Place

Built in 1924, this terrace of 16 houses arranged in a horseshoe offers a quiet, suburban environment with a **strong rhythm** to the door and **window detailing**.



South Wimbledon Station

Designed by Charles Holden and opened in 1926, the station forms part of a family of stations along the northern line and is a **Grade II listed building**.



Pelham Road

Located to the north-west of High path and dating from the 1880s, this collection of houses boast an array of **repetitive elements** including **arched windows and doors and projecting bay windows**.

PROPOSED DESIGN FEATURES TO BE INFORMED BY LOCAL HERITAGE

Building Materials & Architecture

Certain elements of material and architectural detailing found in South Wimbledon will be used to influence the designs for Phase 3. **Archways** and **glazed brick** are **popular features** of the area and may be included in the emerging designs.



Public Spaces

Public open spaces will be **designed to bring people together** and encourage everyone to spend more time outside. The design for these spaces will take inspiration from classic London squares.



Public Art

Sculptures and interactive artwork can help animate public spaces and offer **opportunities to celebrate local people, heritage** and the community by capturing the legacy and identity of the places.



‘How to celebrate History and Heritage and Extend the High Path Legacy’



Masterplan

+



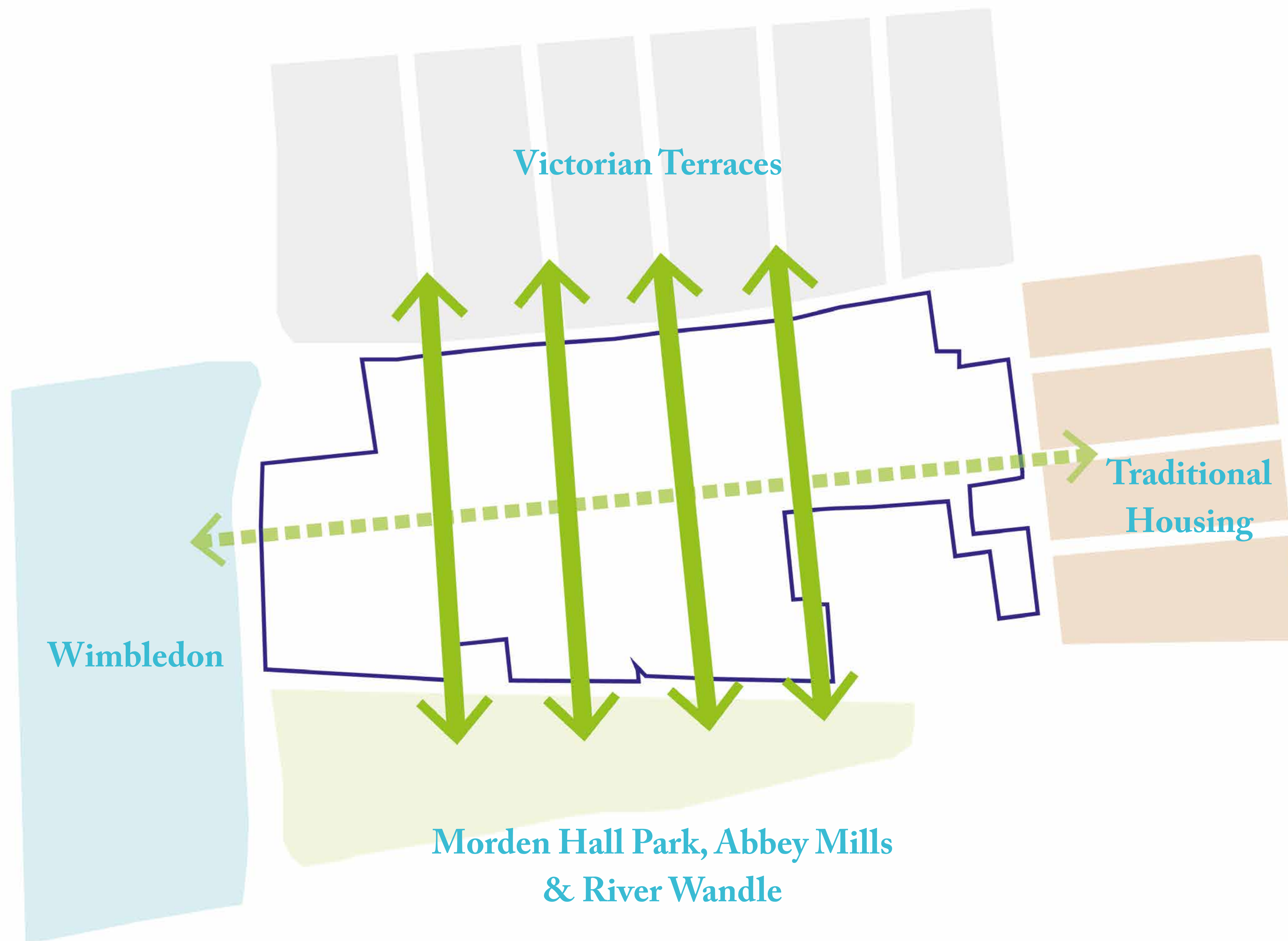
Architecture

+



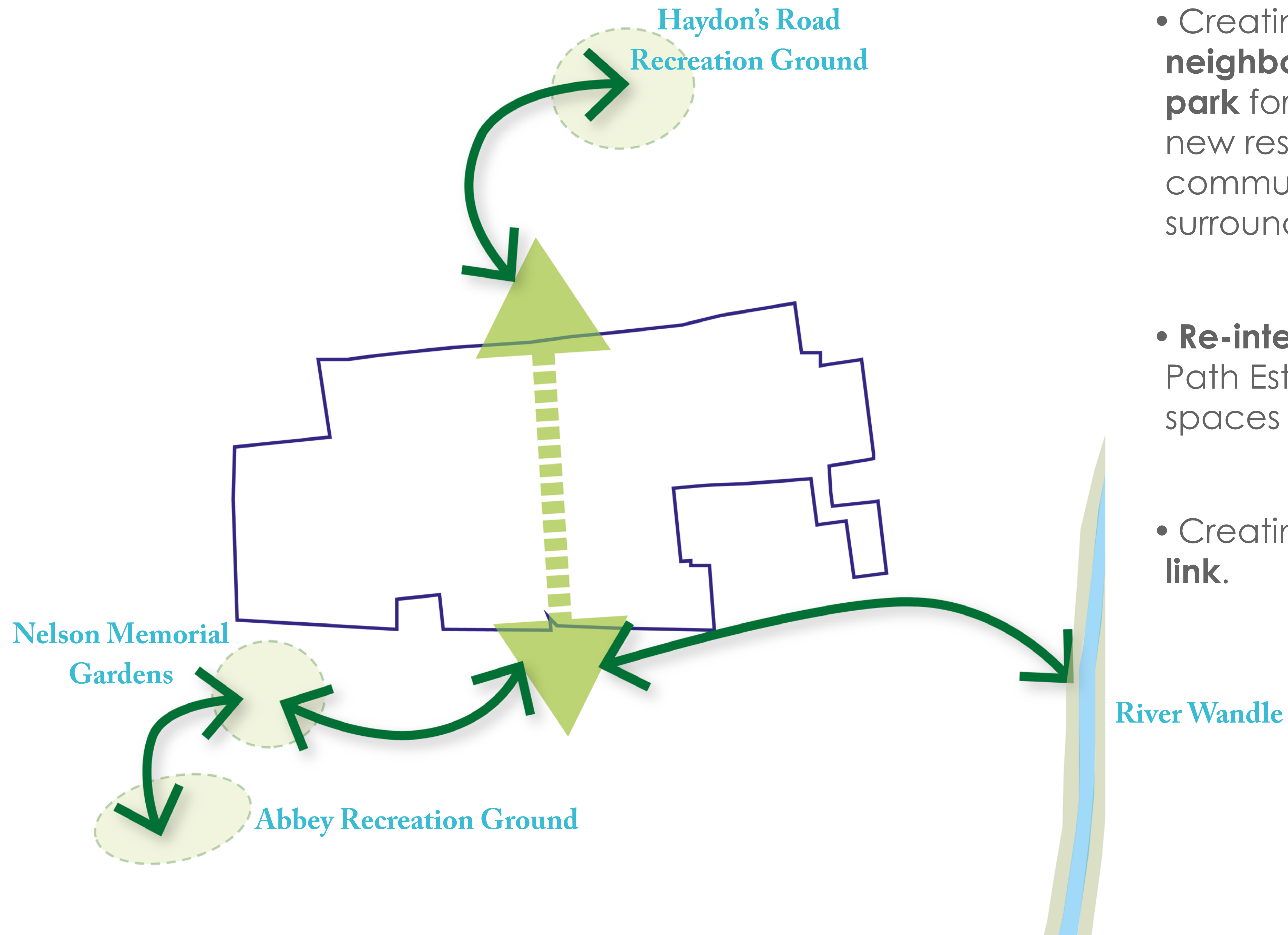
Public realm

Masterplan - Reconnecting Neighbourhoods



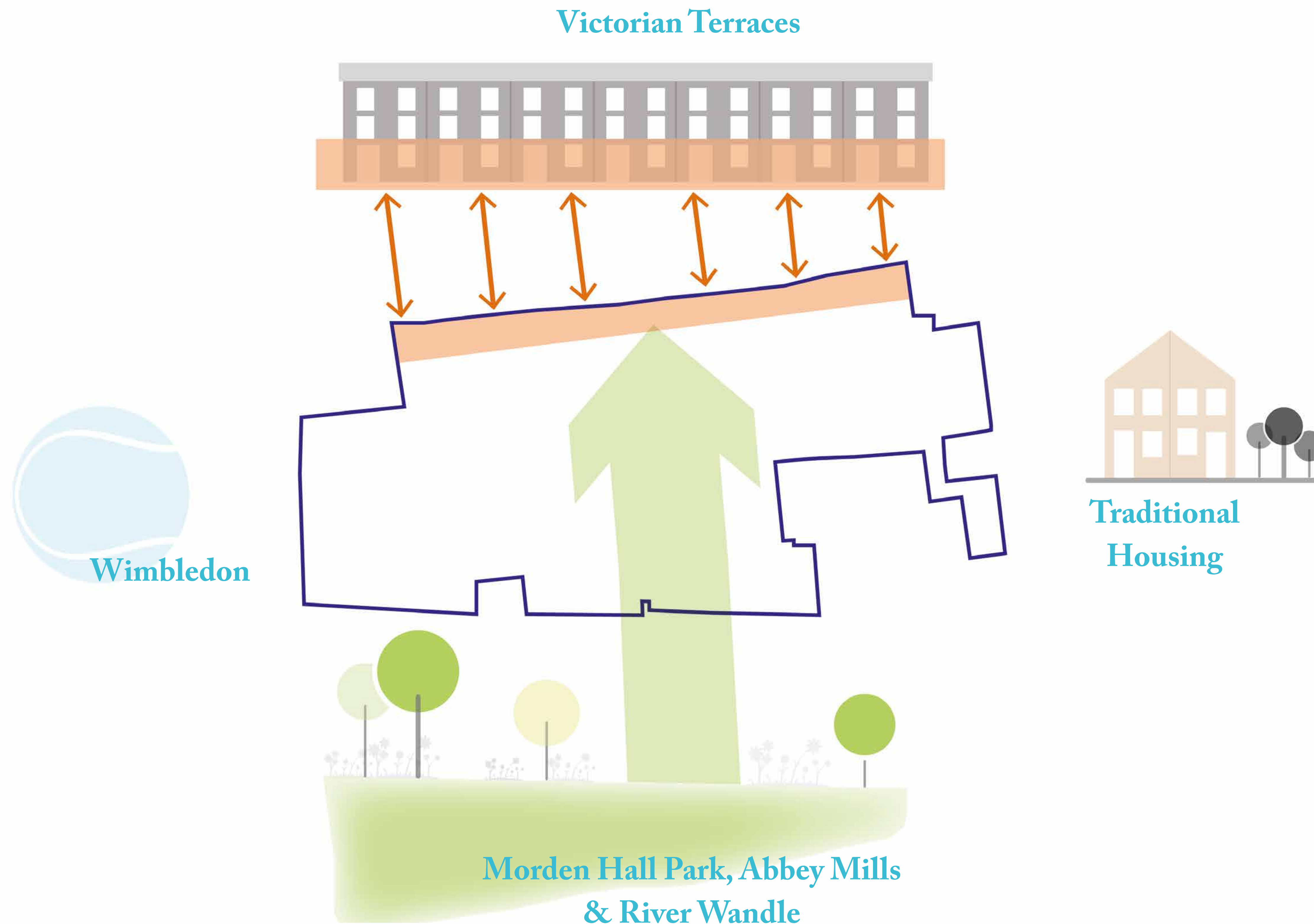
- **Re-connecting** to the traditional **Victorian urban fabric**;
- Creating **traditional streets**;
- **Increasing connectivity** through pedestrian friendly routes North to South and East to West.

Masterplan - Amenity Space for All



- Creating a **new neighbourhood public park** for the existing, new residents and the communities of the surrounding areas;
- **Re-integrate** the High Path Estate with open spaces surrounding it;
- Creating a **green link**.

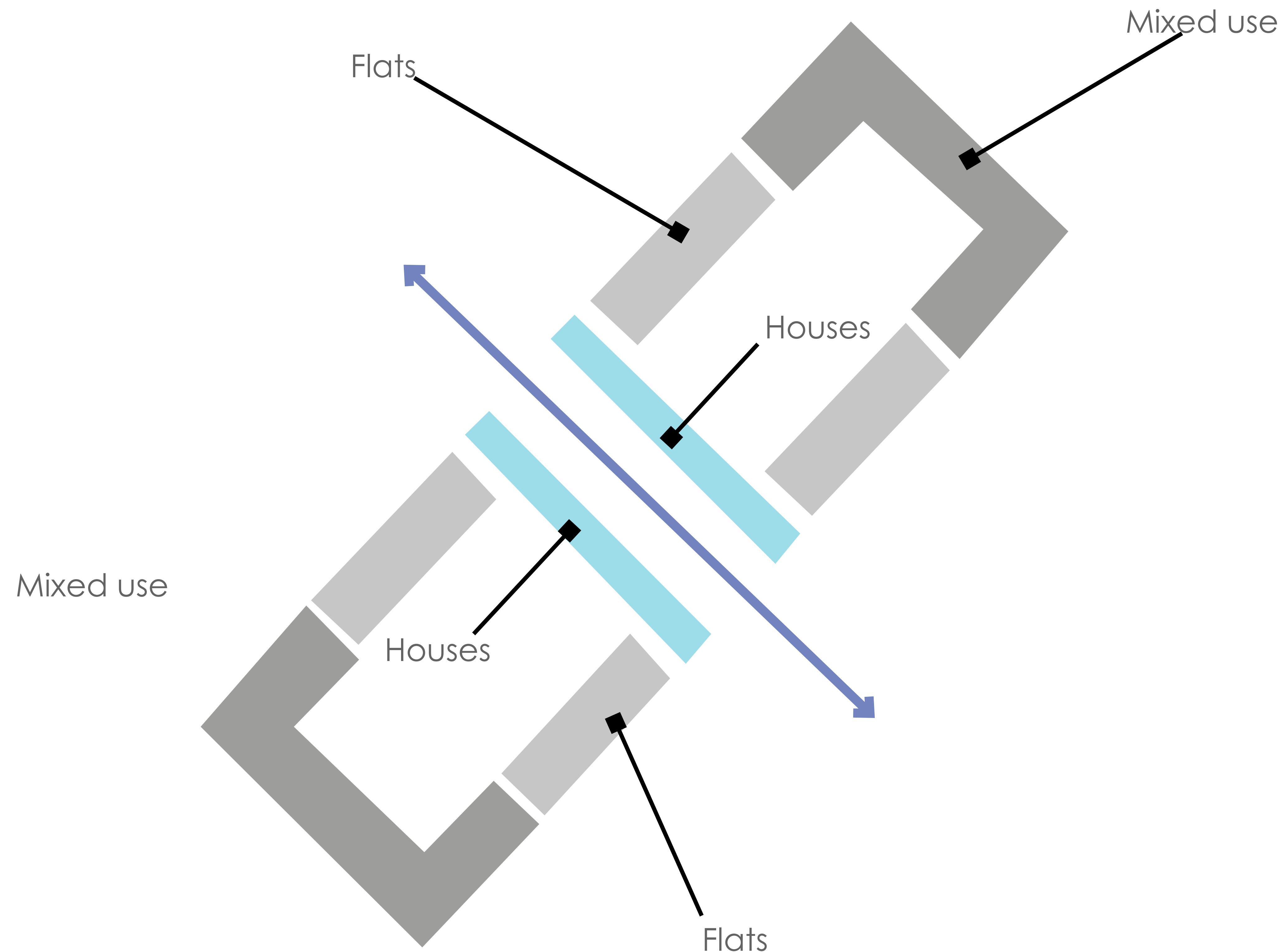
Masterplan - Celebrating Local Assets



- Benefiting from its wealth of surrounding assets;
- The design of buildings, public art and public open spaces **reference to local materials and architectural features;**
- Connecting the place to its surrounding neighbourhoods, **allowing the masterplan to become an active part of the larger community.**

Masterplan - Re-thinking the Victorian Block

The traditional Victorian perimeter block



- Taking influence from existing **traditional street patterns**;
- Providing strong design principles that create easy to understand, **safe and well overlooked streets**;
- **Clear definition** between private and public spaces.

Architecture - Materiality and decoding



Merton High Street

London stock brick with white stone detail framing openings



Bank House Building - Merton Road

London stock brick
Projecting brick details add texture



Southey Road

Red brick and stone
Rich vertical articulation



The Old Stables - Queens Road

London stock brick and projecting brick details



Southey Road

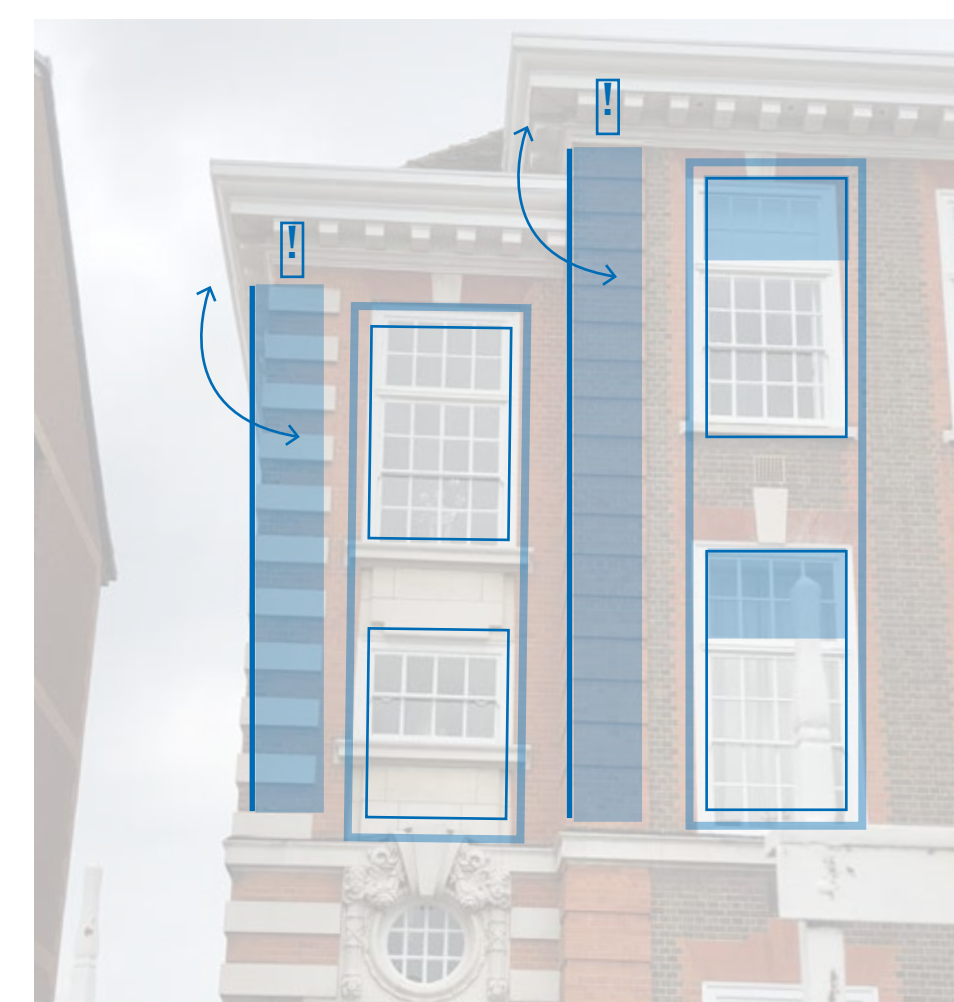
London stock brick and projecting brick details



Retail at ground floor creating a first floor datum line / Red brick and white stone elements / Dynamic building parapet



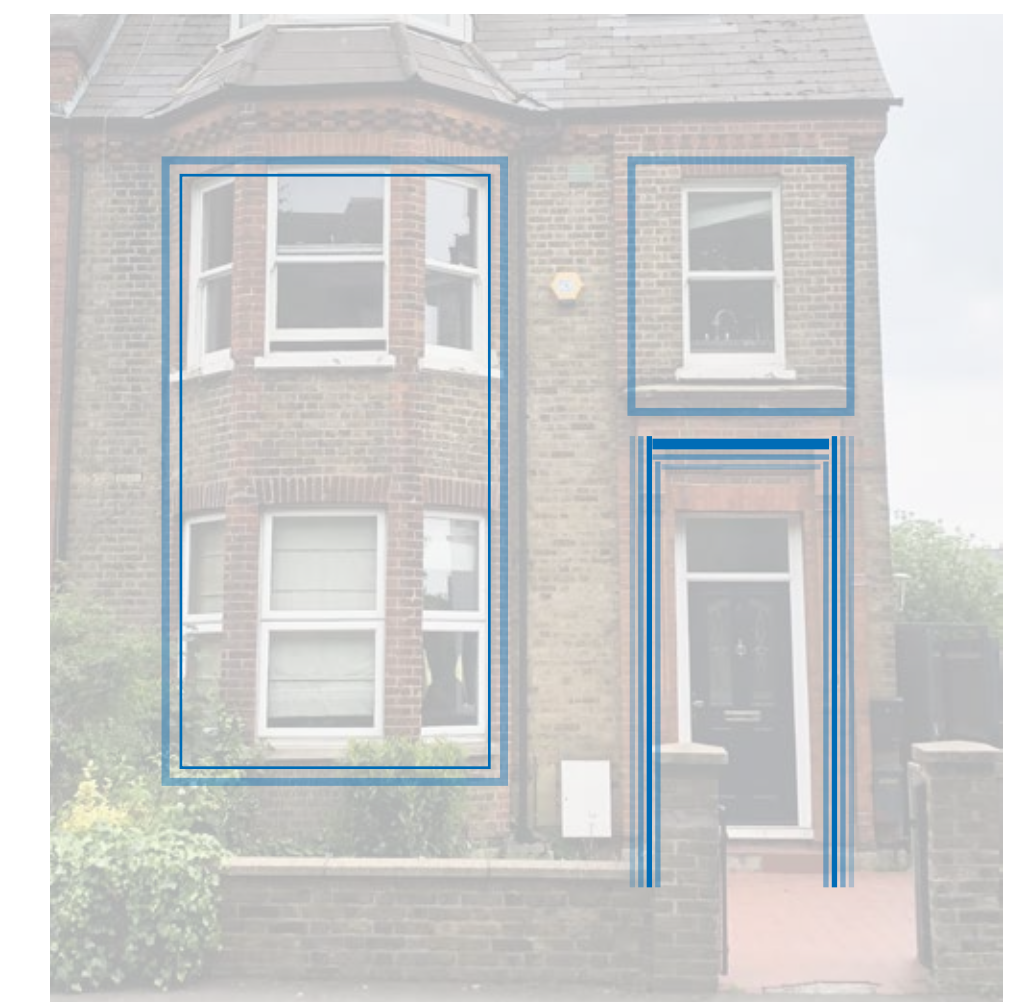
Punctuated openings framed in white / vertical breakdown of massing / brick detail



Depth, richness of layers and contrasting palette of materials/ vertical articulation / celebrating the corner / white critical style windows

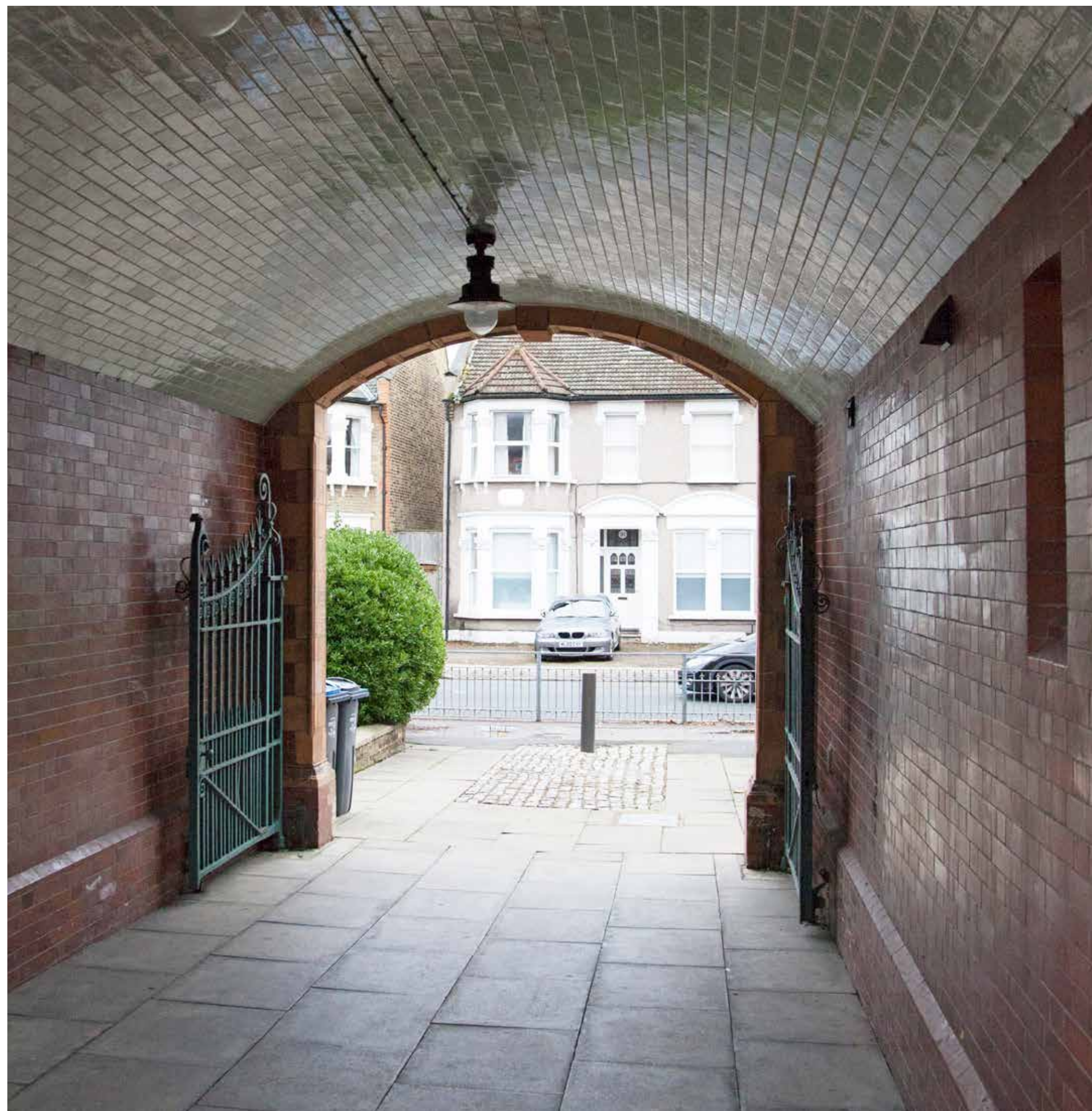


Archways to announce entrances and courtyard access points / glazed brick detail



Facade layering through recessed projecting brick details / Bay windows create vertical breakdown of the elevation

Archways



Arched gateway, the Old Stables, Queens Road.



Artist impression. Archway - view looking north from Rowland Way towards the courtyard.

Public Realm

Building & Street Names



Public Realm

Public Art



Public Realm

Community Artwork

