

Parking at Ravensbury

Today's event is about temporary parking arrangements during the construction of the first new homes at Ravensbury.



Aerial view of proposed new homes from the Ravensbury garage site planning application

A planning application has now been submitted for homes on the Ravensbury garage site.

Proposals for temporary parking spaces are part of a separate planning application that will be submitted on 26 May.

Our proposals include 36 temporary parking spaces, plus driveway conversions to compensate for 50 parking spaces that will be suspended on Ravensbury Grove.

Please provide us with feedback today. You will also have the opportunity to submit your comments on the planning application to Merton Council.

Parking suspensions

The construction of new homes will require the suspension of 50 parking spaces on Ravensbury Grove.

Parking suspensions on Ravensbury Grove will be applied for through a separate highways application (Traffic Regulation Order) in September. Merton Council will carry out statutory consultation on this application.

Parking suspensions, with double yellow lines, will need to be in place throughout the construction period.



Proposed parking

Temporary parking areas are proposed on Ravensbury Grove and Hengelo Gardens.

Temporary parking spaces will be applied for through a separate planning application in May. Merton Council will carry out statutory consultation on this planning application.

All proposed spaces will be for Ravensbury residents only, controlled by parking permits to be issued by Circle Housing.

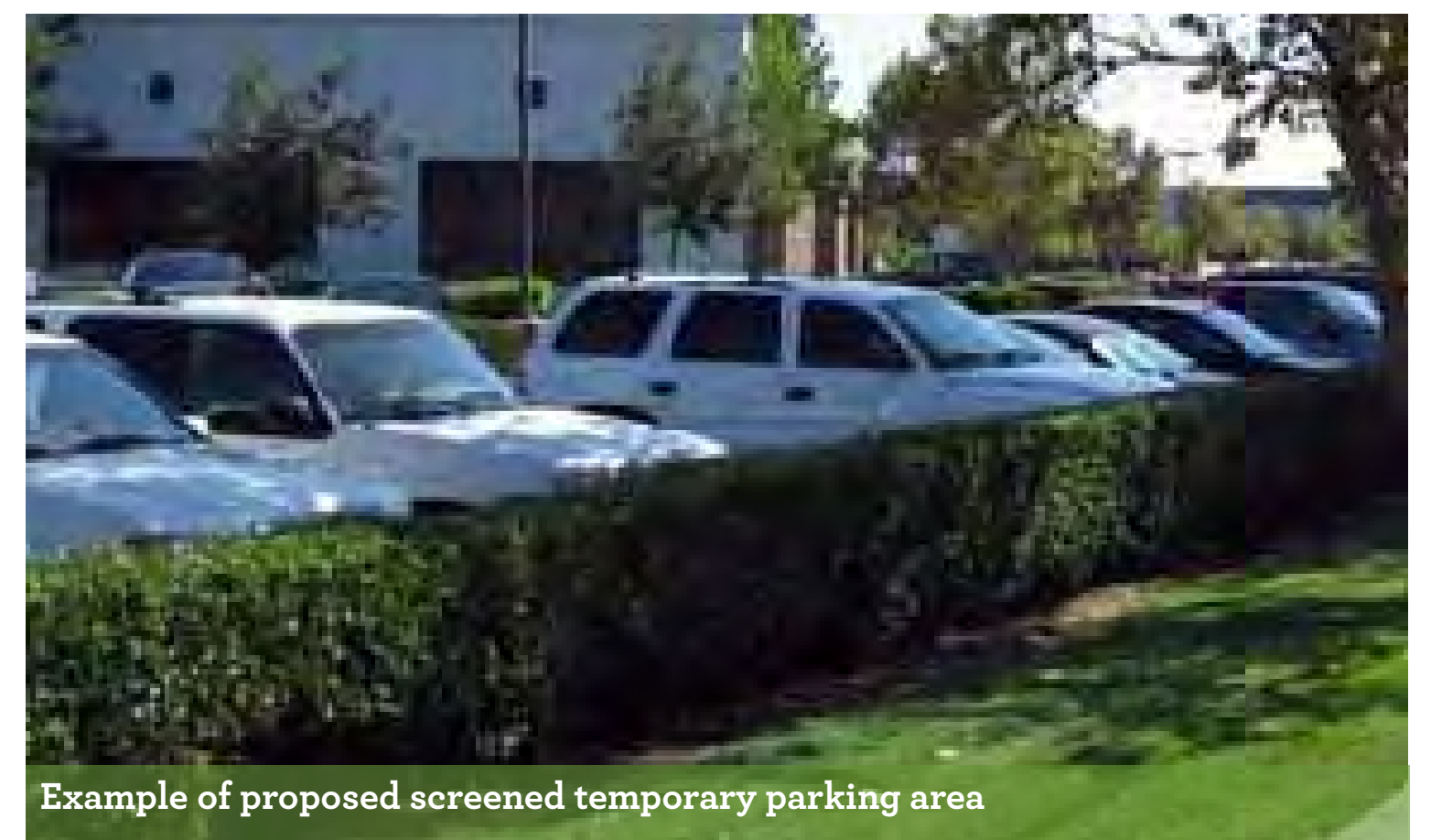
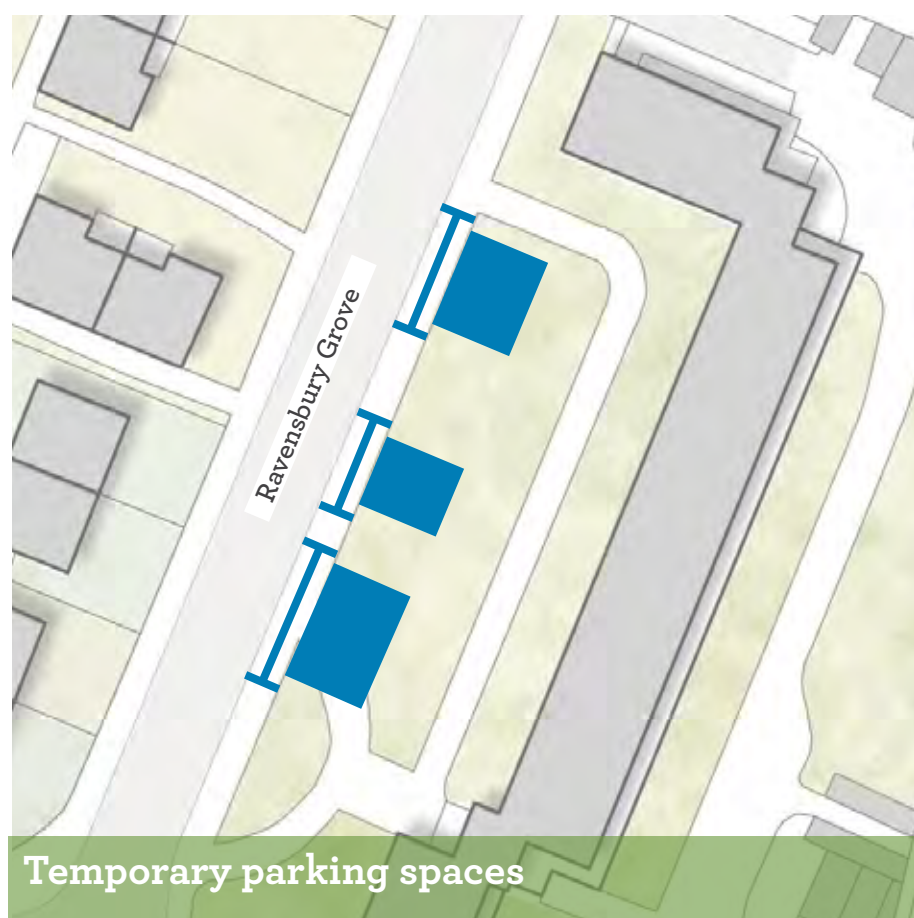
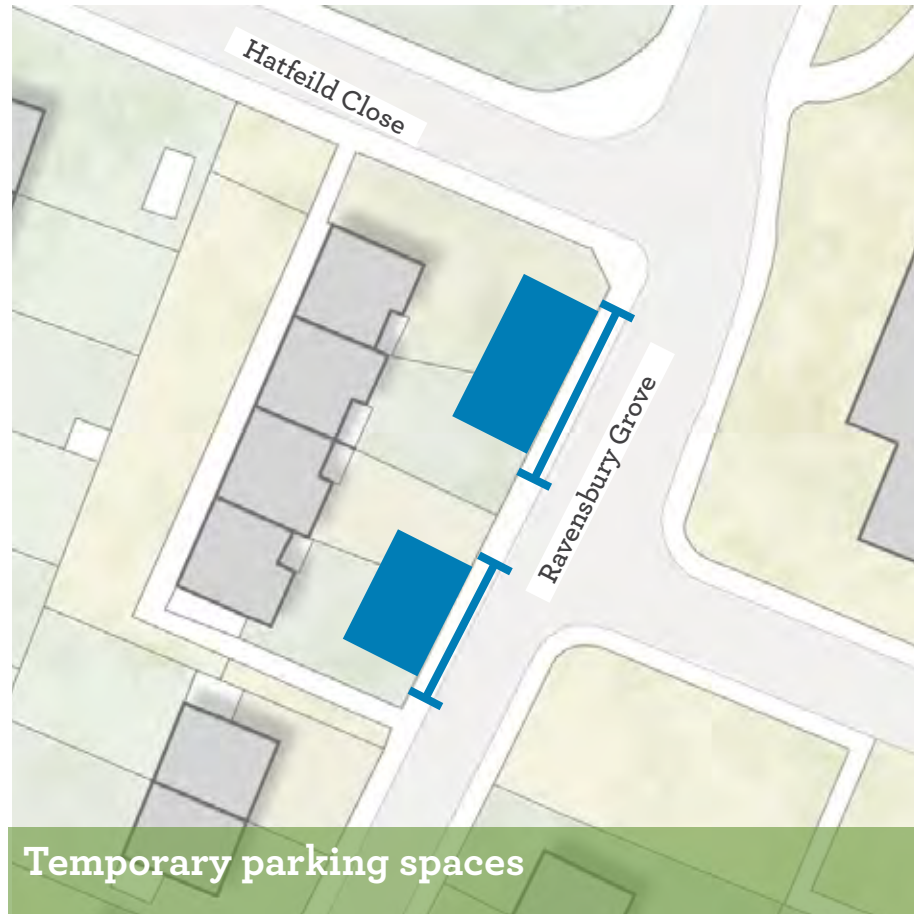
Driveway conversions are not included in the planning application and will be provided separately. Circle Housing will approach households separately concerning driveway conversions.

36 temporary parking spaces are proposed

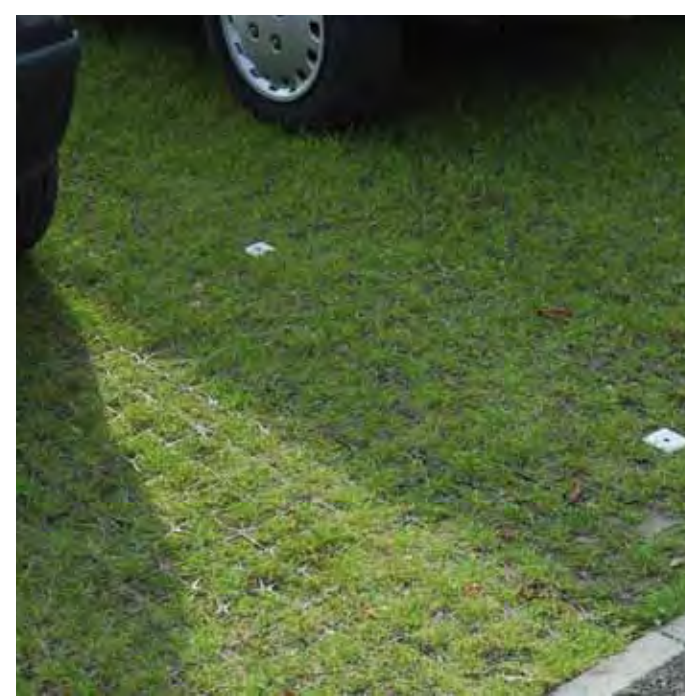
Additional driveway conversions will be offered to houses across the neighbourhood



Proposed parking areas



A dropped kerb will be installed by Merton Council to give access to the temporary parking areas.

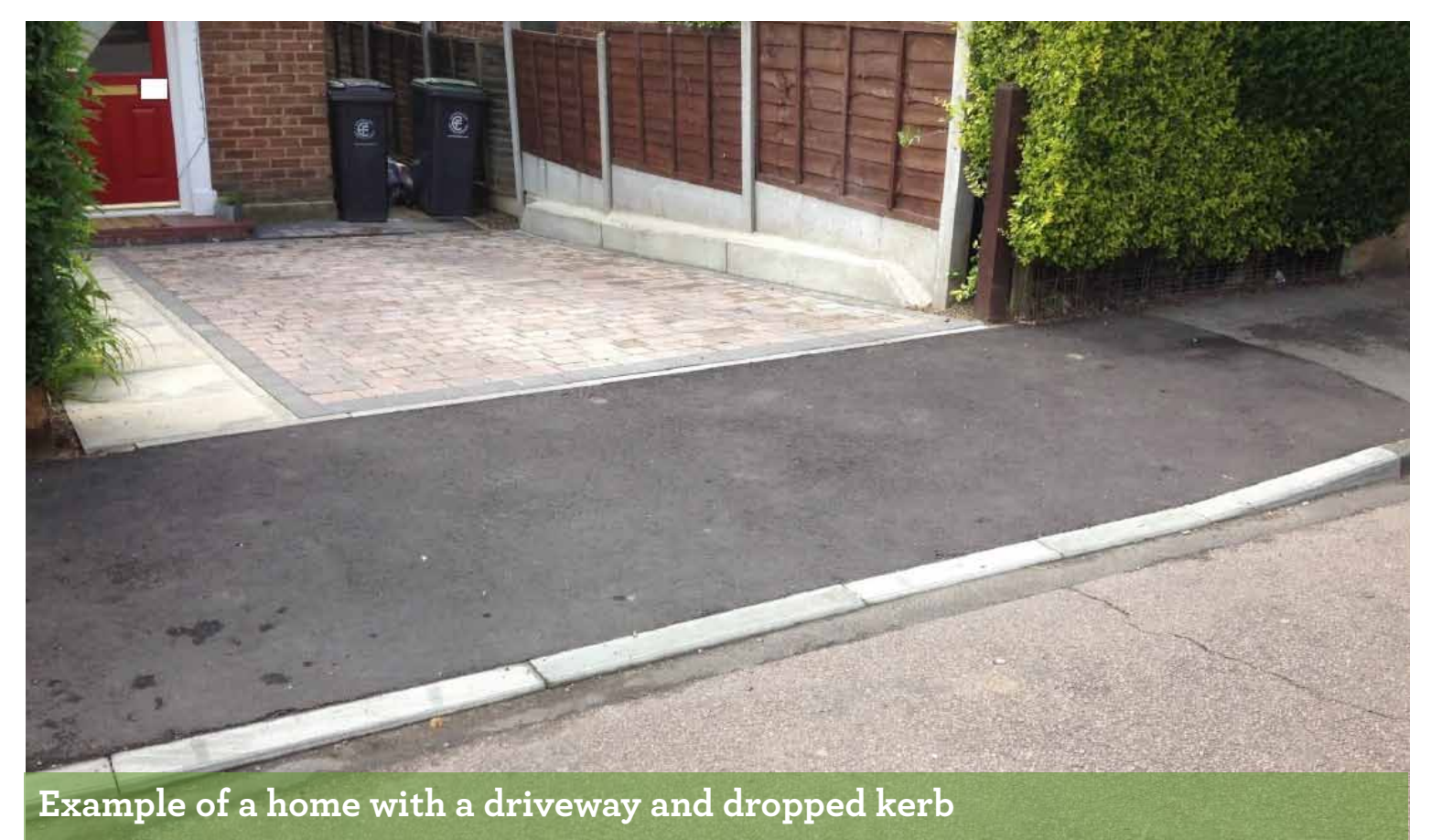
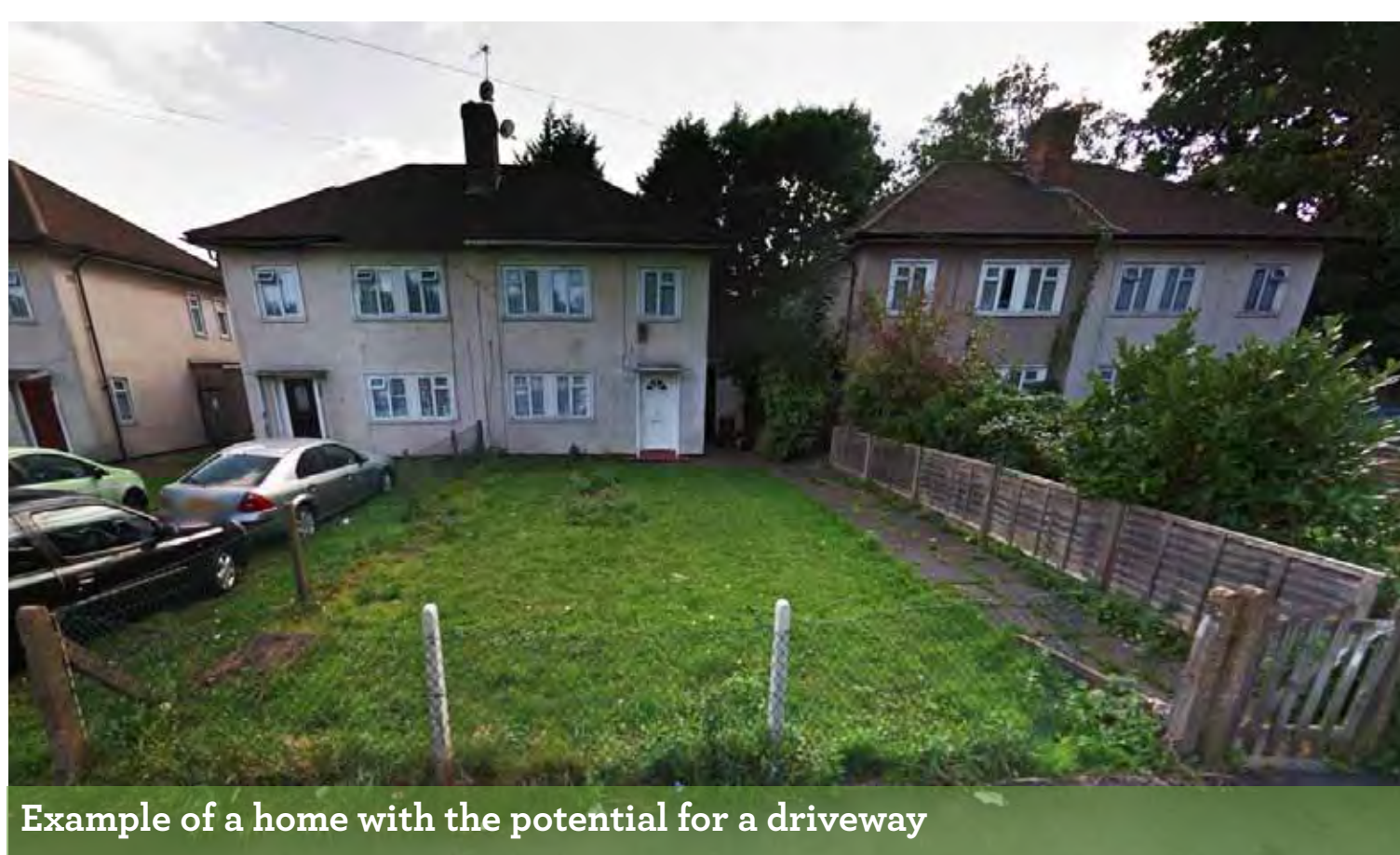


Temporary parking areas will be surfaced with a permeable reinforcement mesh to protect grass and allow water to drain.

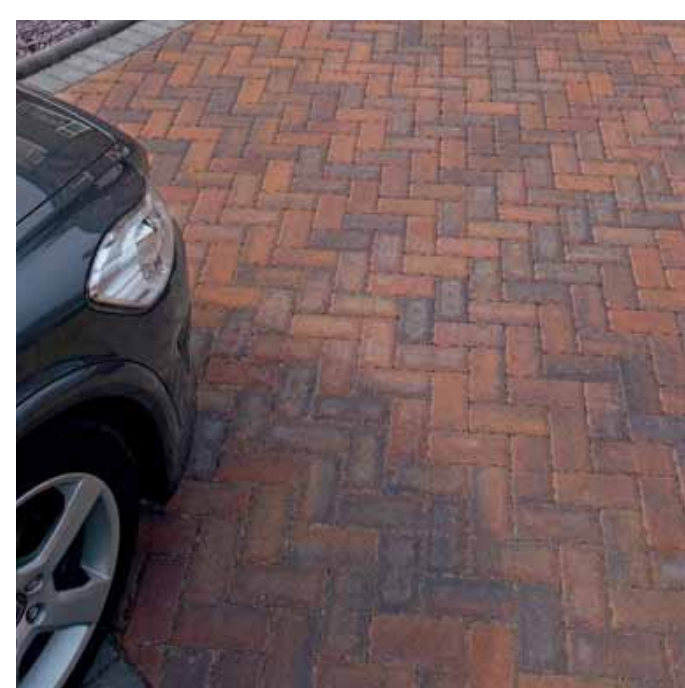


Temporary parking areas will be bordered by a mature planted hedge to screen cars and headlights.

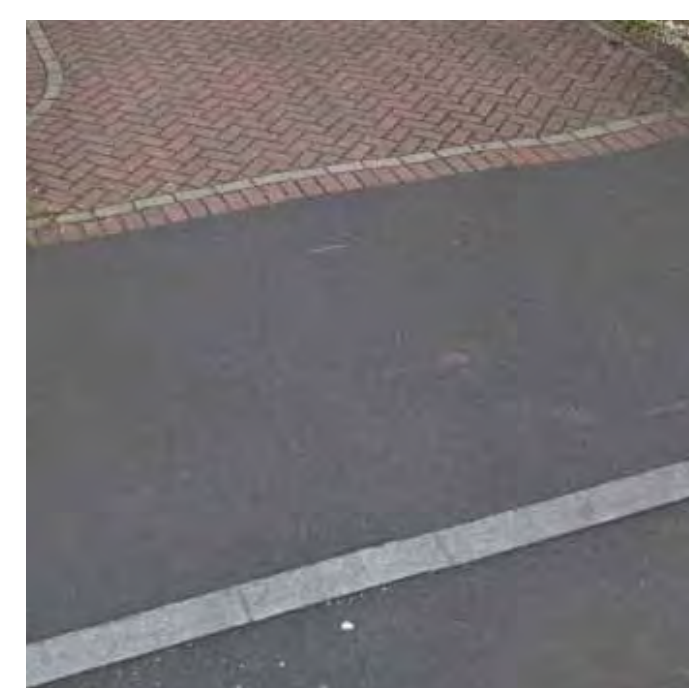
Proposed driveways



A dropped kerb will be installed by Merton Council to give access to driveways.

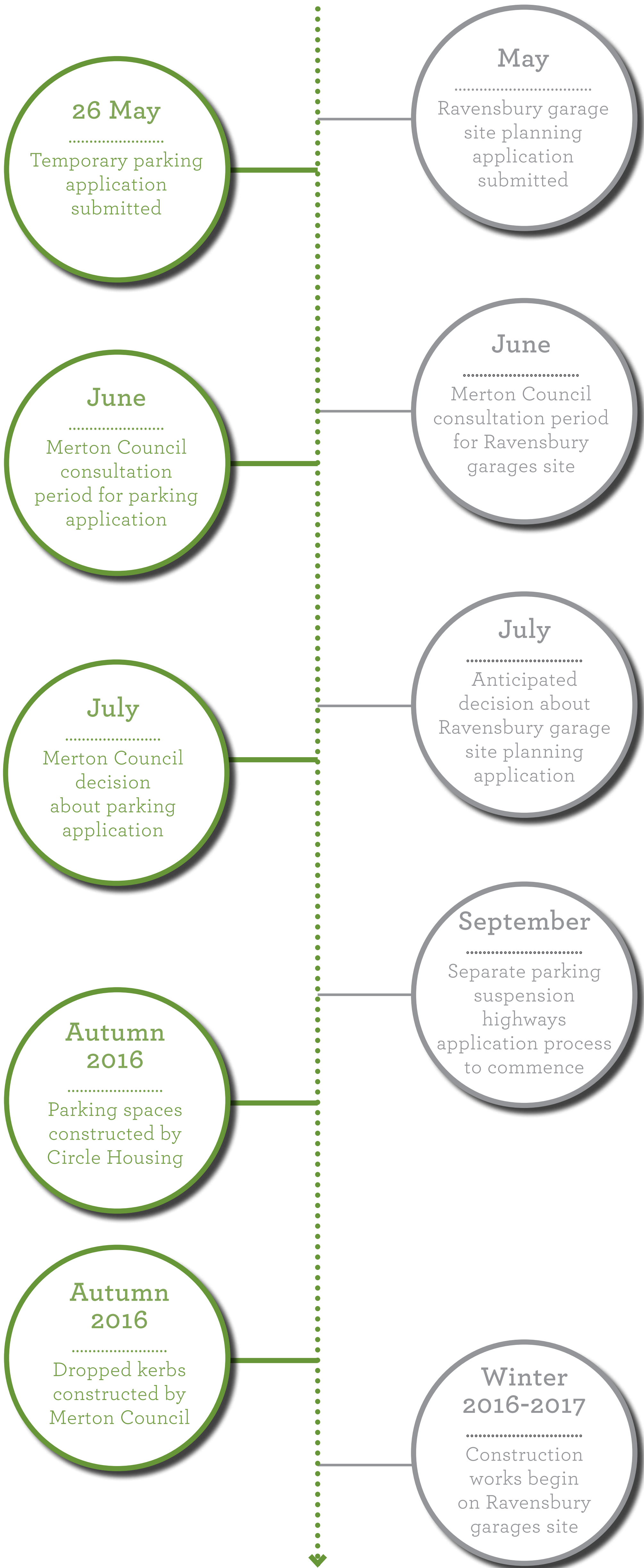


Driveways will be surfaced with attractive permeable block paving to allow water to drain.



Driveway conversions are not included in the planning application and will be provided separately by Circle Housing.

Timeline



Parking suspension

The separate parking suspension application will only be processed if and when planning permission is granted for homes on the Ravensbury garage site.

Merton Council will carry out statutory consultation on the separate highways application (Traffic Regulation Order). Consultation will be outside of the school summer holiday period.