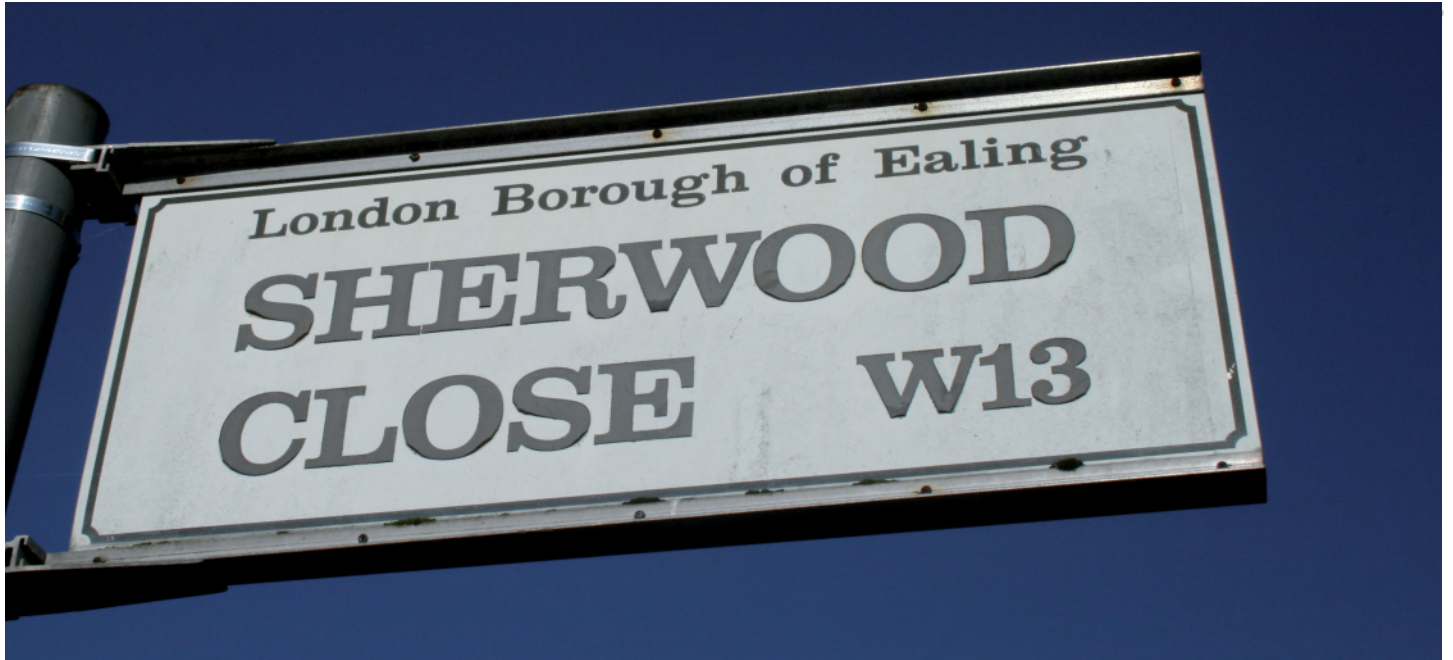


CLOSER



Issue 2 | January 2013

Sherwood Close Newsletter



Come and see the proposed masterplan for the estate!

Happy New Year to all Sherwood Close Residents. After receiving some great feedback from you at the Christmas event on **Saturday, 8 December** (see page 2) we're ready to show you the proposed masterplan for Sherwood Close.

Drop in to the marquee next to Target House, by Northfield Avenue anytime between 11am and 2pm on **Saturday, 2 February** to have a look at the proposed masterplan and let us know what you think, plus find out more about Affinity Sutton's approach to housing management and how we will be investing in the local community.

There will be more events over the coming weeks and months to make sure everyone can have a say and contribute to making the new Sherwood Close a great place to live, not just for existing residents but for future residents and those living in the surrounding area too. In addition to this, there will be a statutory consultation process when formal planning permission is sought later this year. We hope you can join us on **Saturday, 2 February** and look forward to seeing you.

Sherwood Close Regeneration Team

Christmas Event

We had a great turn out at the Christmas event on Saturday, 8 December with 25 households braving the cold to meet the team and enjoy a mince pie or two!

The feedback we received on what you liked and didn't like about your current estate was really helpful and we've taken on board your comments and the comments from Ealing Council when designing the proposed masterplan.

Here is what you said about your existing estate:

Likes:

'...like the location – connections to West Ealing and Ealing Broadway'

'...like the trees and would like more trees'

'...like the size of flats; light and spacious'

Dislikes:

'...safety, lights, security; too many alleyways and podium area, it's not very child friendly'

'...need better connections to Northfield Avenue and shops'

'...appearance of the estate'

'...empty garage area, lack of parking control and permits'

'...rubbish area is too close to home. Mice have easy access to homes'

'...poor sound insulation on flats'

Thank you to everyone that attended!

HOUSING NEEDS SURVEYS ✓

All Council Tenants have now received a reminder to complete their housing needs survey.

It's really important that you complete the survey so we can make sure you are allocated the right sized home in the future and that the new development is planned effectively.

To make this as easy as possible we have a number of ways that council tenants can do this:

Online

Please go to www.surveymonkey.com/s/SherwoodHousingAssessment and follow the instructions. It should take about 15 minutes to complete.

At the local estate office

Mumta and Natalie will be able to help you complete the form at the weekly surgery.

If you haven't completed your survey please can you do so by the end of January.

DROP IN SURGERY

It's been lovely seeing so many of you at the Surgery.

If you need to speak to Natalie or Mumta you can visit the surgery at 1 Target House on Tuesday's between 10.30am-12.30pm. Don't forget they can also help you complete your housing needs survey.

And the winner is!

Thank you to all of you who entered our Christmas prize draw, we had three winners:

1st prize - Tina Hobbs of Target House was delighted to win the M&S Christmas hamper. And Sofiane Ouarab of Target House and Sabara Farooq of Sherwood Close, each won a festive selection of Christmas cakes and biscuits.

